

Bluetooth iBeacon & GPS Technology

Integrated Indoor & Outdoor Positioning Solution

Enhanced Situational Awareness & Safety

Improved Monitoring & Auditing Capabilities

Enhanced Productivity

TruFleet's Tracking & Fleet Management Solution



Locate Employees in Real-Time

TruFleet's easy-to-use web-based solution lets you stay connected to your vehicles and employees around the clock. Track the location and movements of MOTOTRBO radios using GPS when outdoors and iBeacon Bluetooth technology when indoors to better manage your mobile workers.

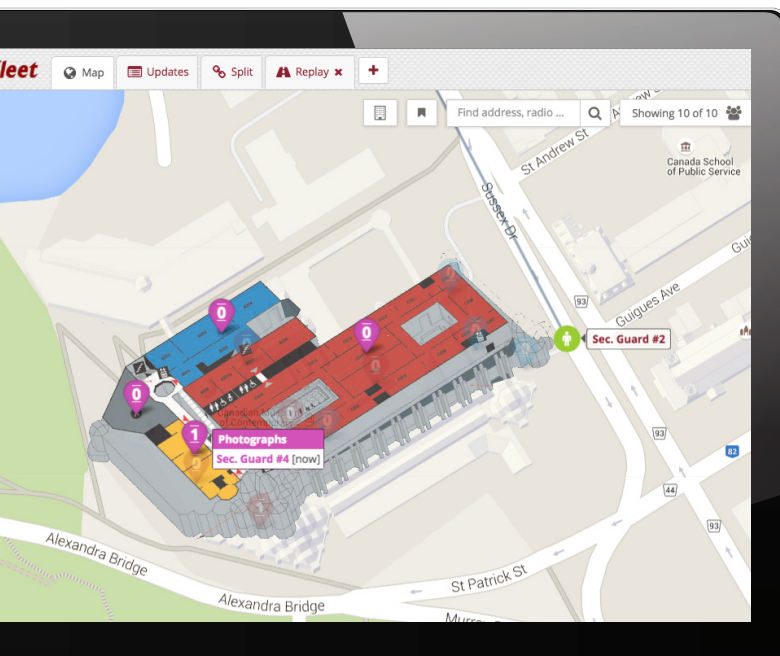
The robust system allows users to track workers whereabouts using a rich, intuitive, functional mapped display accessible via a web browser from any desktop computer, tablet or smartphone. By tracking their whereabouts, mobile users' personal safety can be monitored, location based alarms can be triggered, and comprehensive reports can be generated to optimize efficiency.

iBeacon Indoor Tracking

TruFleet provides real-time indoor location data using strategically placed iBeacons. These wireless iBeacons emit Bluetooth signals which have a range of up to 100 feet (subject to environment) and a battery life of three to five years. As a radio pairs and un-pairs with iBeacons at known locations, TruFleet displays the user's location on the web browser.



When leaving a bluetooth area and going outdoors, the MOTOTRBO radio* seamlessly switches from pairing with Bluetooth beacons to GPS monitoring. TruFleet records the user's whereabouts, as well as the date and time of the radio's movements for historical playback.



**MOTOTRBO E series radios required to track users indoors.*

TruFleet Features

- Seamless indoor & outdoor tracking
- Multi-floor monitoring
- Detailed replay of routes
- Wireless installation
- Customizable geo-fences
- Restricted area alerts dispatched in app, email & radio text
- Beacon positioning on map
- Detailed reports
- Man Down integration